

OFFICIAL PUBLICATION OF THE OREGON STATE SNOWMOBILE ASSOCIATION



Jared Broadwater doing his thing

POLARIS

POLARIS
SNOWMOBILES

POLARIS
TIMBERSLED

SEGWAY



OSSA Dealer Of The
Year 2023-2024 Season

41 Years in business.



***Thanks for all your support,
You have made us what we are today!***



MT. HOOD POLARIS

27850 SE HWY 212 BORING, OR 97009
Tuesday - Friday 9am to 6pm / Saturday 9am to 5pm

503-663-3544

www.mthoodpolaris.com

TRESPASSING

Threatening snowmobiling access everywhere!

Dave Newman, ACSA Vice President

I believe, or at least I hope, I am preaching to the choir here. If you are a club member you should already know that you are only allowed to ride where you have permission. But we also know that is not always the case with everyone. Too often we are seeing snowmobilers riding where they are not allowed, by definition, trespassing.

Trespassing is a problem across the county. In the trails riding areas where trails are located on private property, landowners typically only allow snowmobiling to use their property on a designated corridor and any riding outside of the marked trail without permission is considered trespassing. This not only leads to a closure of a trail across one property, but it also often results in the closures of an entire section of a trail system. Many times we have found trespassing may have triggered a trail closure, but other underlying issues may have contributed, such as loud pipes or personality conflicts with club members or government officials. Regardless, this requires club volunteers to work with local landowners to create a new trail or in some cases, a permanent loss of a trail.

Even in areas when snowmobiles are allowed on public lands, it may not mean you are allowed to ride everywhere. In areas where most snowmobiling takes place on public lands, it is important to know there are areas where snowmobiles are not allowed. Riding in areas off limits to snowmobiles is considered trespassing. It is every snowmobiler's responsibility to know where they can legally ride and where it is prohibited.

While laws vary from state to state, trespassing will result in a fine if caught. Even more important, trespassing costs us access.

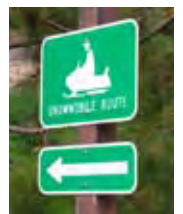
What has the American Council of Snowmobile Associations (ACSA) done about the problem? We have used social media to bring attention to the issue and encouraged snowmobiles to use the Snowmobile Manufacturers "Take the Pledge" campaign. ACSA has held several contests to bring attention to trespassing. We are currently holding another contest for all ages, to bring attention to the issue through the youth and hopefully their parents. Participants may have a chance to win prizes by submitting coloring pages, a word search, memes or a short video. For more information go to the ACSA website at **www.snowmobilers.org**.

What can you do? When someone riding in your group rides where not allowed, call them out and explain to them why it is a problem. If you catch someone trespassing report them to your local law enforcement. Let your local law enforcement know where problem areas are, so they know where to best use their resources when patrolling. Clubs can also use their social media pages to bring attention to trespassing. Make sure your trails have appropriate signage to educate everyone to stay on the trail and only ride where allowed.

We ask clubs who experience trail closures resulting from trespassing to report them to their state snowmobile association so we can show the true cost of this issue. We find many times clubs just react to the closure by finding a re-route.



We encourage everyone to be part of the solution, not part of the problem!



CASCADE MOTORSPORTS

BEND, OREGON

**SLED
BLOWOUT!**
THE BEST DEALS OF WINTER ARE HERE!

RMK STARTING AT \$11,499

OR

0% APR FINANCING!

SALE ENDS Feb. 28th

OVER 50 UNITS AVAILABLE !

WEBSITE



CALL TODAY (541) 389-0088

POLARIS

KTM

TIMBERSLED

Why should I register my snowmobile?

Did you know that registering your snowmobile helps fund the groomed snowmobile trails in Oregon?

The Oregon State Snowmobile Association (OSSA) receives money from the Oregon Department of Transportation (ODOT). The money comes from the state gas tax. It is put into a fund managed by ODOT. OSSA has a contract with ODOT to facilitate trail maintenance which includes grooming the many miles of snowmobile trails in the state of Oregon. The percentage is based solely off of how many snowmobiles are registered in the state of Oregon. The more snowmobiles that are registered the more money OSSA gets to groom the trails. So, if you enjoy riding your snowmobile on the many miles of groomed trails in the state of Oregon. Please register all of your snowmobiles, whether they run or not.

Registration for a snowmobile is only \$5 per year for 2 years.

A fine for no registration is \$115.

Please register your snowmobile and help keep our snowmobile trails groomed for everyone to enjoy.



Thank you
OSSA

Groomed vs Ungroomed





Assure The Future of Snowmobiling

Become a member of your local Snowmobile club.



SNOWMOBILERS.ORG

Discounts for OSSA Members

Paulina Lake Lodge – 15% off food

(541) 536-2240

Open Friday – Sunday beginning December 26, 2024

If you have a group of 10 or more riding during the week, contact the lodge 2-3 days prior to ride and they will open for you for lunch.

Moto Aspirations – 10% off parts & 15% off service

16605 Assembly Way Ste 101

La Pine, OR. 97739

(541) 536-1077

Cascade Motorsports - 10% off parts

20445 Cady Way

Bend, OR. 97701

(541) 389-0088

Pro Caliber Motorsports– 10% off parts & service

3500 N Highway 97

Bend, OR. 97703

(541) 275-6553

Elk Lake Resort– 15% off food

(541) 480-7378

Central Oregon Adventures – 10% off groups

(541) 593-0339

Crater Lake Resort & Store -- 20% discount for resort reservations to anyone who mentions our ad in the OSSA News.

This discount is good through May, 2025

541-381-2329

50711 Crater Lake Highway, Chiloquin, Oregon 97626

Hours of Operation:

Mon - Wed Noon to 5pm

Thurs - Sun 10am to 5pm

Elk Lake Resort– 15% off food

(541) 480-7378

Central Oregon Adventures – 10% off groups

(541) 593-0339

Show your club or OSSA membership card to receive these discounts.



JOIN OSSA TODAY

membership signup link. <https://www.oregonsnow.org/become-a-member/>

ODOT has cut our budget at OSSA (Oregon State Snowmobile Association) by 30% so we had no choice other than reducing all the club's grooming funds by the same, there is strength in numbers and your support is greatly needed and appreciated.

The other groomers and I are happy to groom and open trails for all users, cross-country skiers benefit from the grooming as do snowmobilers, and here on the Malheur NF we are very fortunate to have nearly zero user conflicts.

Our local club membership is down from past years and has never been supported to the level it could be. I know there are a lot of snowmobilers, as well as X-country skiers who are not members but benefit from our efforts.

Please hit the QR code below and renew your membership or join for the first time! Membership is only \$45.00 per year.

There is a lot of effort that goes on behind the scenes to make these winter trails work, your support is greatly appreciated.

Cheers & Have a Great Season

Dave

OSSA Director of Grooming Dist. 6





OSSA CLUB WEB SITES

www.BurntRiverSnowmobileClub.com

www.CascadeConnection.org

www.ChiloquinRidgeRiders.com

www.columbiagorgepowersledders.com

www.FourCornersSnowmobileClub.com

www.GrantCountySnowballers.org

www.HarneyCountySnowmobileClub.com

www.HiDesertStormTroopers.com

www.kbsnowdrifters.org

www.lapinedodgerssnow.org

www.snodrfters.com

www.mcsnowbusters.wixsite.com/website

www.MtHoodSnowmobileClub.org

www.mtjefferson.org

www.NorthSantiamSnowmobileClub.com

www.OchocoSnowSports.com

www.PanhandleSnowmobileClub.com

www.roguesnowmobilers.com

www.sisterssnogofers.org

www.SumpterValleySnowmobileClub.com

www.tollgatetrailfinders.org

www.walkerrimriders.com

www.TwoRiversActivityClub.com

www.WallowaCountyGamblers.com

SNOWMOBILERS CARE ABOUT THE ENVIRONMENT



DON'T MISS A SINGLE EVENT, RENEW YOUR MEMBERSHIP TODAY!

REPRESENTATION • EDUCATION • COMMUNITY SERVICE • GROOMING • SOCIALIZING



OSSA Membership

Become a general member online today at <http://oregonsnow.org/about/>. Please also consider joining your local club to further help support our sport. (This is only for OSSA membership. Most club memberships automatically include a membership in OSSA. Be sure to check with your local club. Many of our members have memberships in several clubs. If you are a member of multiple clubs you would only pay OSSA dues one time.)

Use the online form at <http://oregonsnow.org/about/> to join OSSA only.

If you wish to join a local club, please contact your local club directly. Local club membership automatically includes a membership in OSSA. Thank you for your support!

Note: Many powersports dealers give discounts to OSSA Club members.

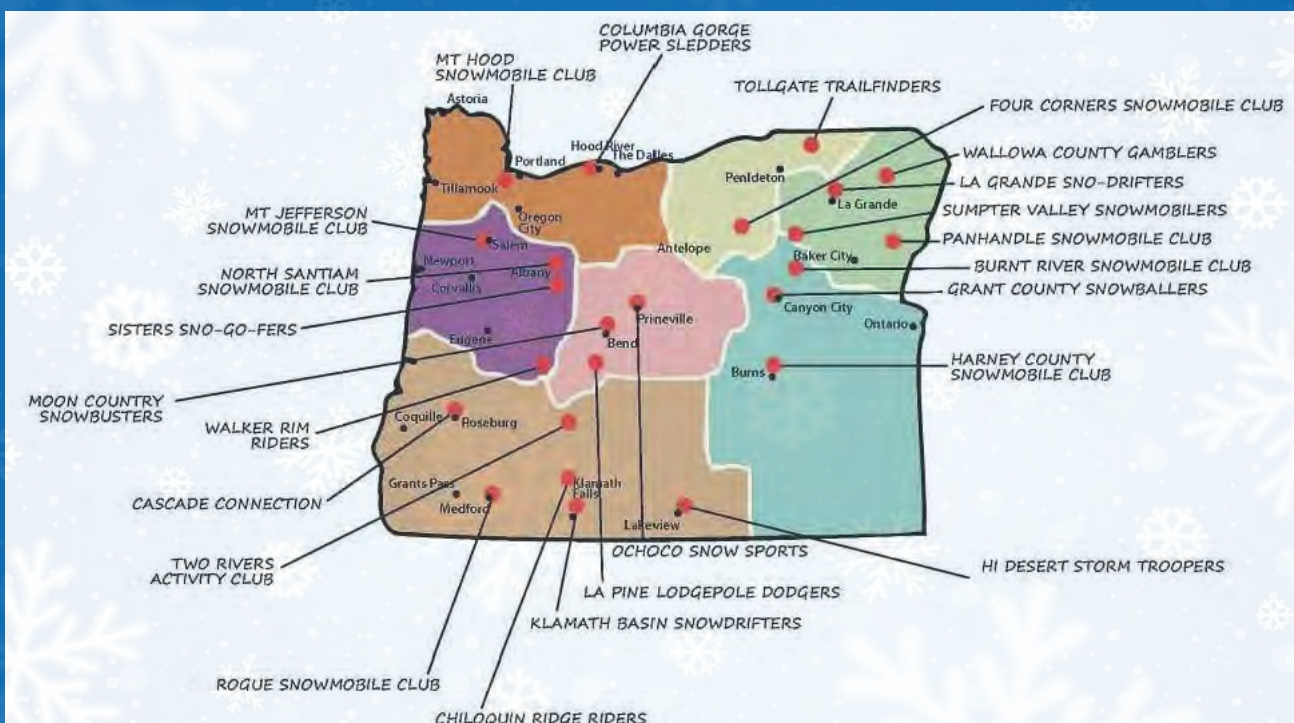
Some attributes of club membership include :

- * Cooperative enjoyment in club activities, rides and play days.
- * Assistance through club membership in formalizing legislation for snowmobiles.
- * Learning new areas to ride and familiarity with areas through joint rides.
- * Strength in state organization through local club organization and input.

- * Opportunity to gain knowledge of snowmobiling through club meeting speakers.
- * Obtaining a feeling of "Belonging" a common bond experience.
- * Meet new people and make new friends.
- * Promote and understand safe snowmobiling.
- * To protect and preserve the rights and freedoms to enjoy the sport of snowmobiling.
- * To help preserve and promote our natural resources.
- * Assist in search and rescue missions.
- * The ability to enjoy snowmobiling activities as a family and at a price reasonable for doing so.
- * Helping provide a trail groomer.
- * Helping to discourage bad snowmobiling practices.
- * Assistance in formulating and conducting youth driver education clinics.
- * Promote sanitation and non-littering in all areas used for snowmobiling.
- * Serve as a catalyst in service to state and federal agencies in providing new snowmobiling trails and parking facilities.
- * Club membership brings recognition to the member from both state and federal agencies and prestige in that recognition.

Our Volunteers spend hundreds of hours taking care of and grooming snowmobile trails.

A ski lift ticket for one person for one day is \$100 or more.
Say "Thank you" to our volunteers by joining your local club today.
It's only \$60 per year or less for your entire family. <https://oregonsnow.org/clubs/>





Officers & Directors

President

Dennis Jordan
(541) 821-8570

Email

Vice President

TJ Reilly
(503) 804-2075

Email

Past President

Email

Executive Director

Lisa Maloney
PO Box 6255
Bend, OR 97708
(541) 797-8880

Email

Assistant Executive Director / Membership

Lisa Burt
(541) 480-0479

Email

Membership Director

District 1

- Mt Hood Snowmobile Club
- Columbia Gorge Power Sledders

Bruce Harbison
(512) 583-2905

Email

Membership Director

District 2

- Mt Jefferson Snowmobile Club
- North Santiam Snowmobile Club

Jim Brister
(503) 559-6391

Email

Grooming Director

Districts 1 & 2

- Mt Hood Snowmobile Club
- Columbia Gorge Power Sledders
- Mt Jefferson Snowmobile Club
- North Santiam Snowmobile Club

Anthony Kuenzi
(503) 891-0351

Email

Membership Director

District 4

- Ochoco Snow Sports
- La Pine Lodgepole Dodgers
- Walker Rim Riders
- Sisters Sno-Go-Fers
- Moon Country Snowbusters
- Two Rivers Activity Club

Roger Ellis
(503) 475-8095

Email

Grooming Director

District 4

- Ochoco Snow Sports
- La Pine Lodgepole Dodgers
- Walker Rim Riders
- Sisters Sno-Go-Fers
- Moon Country Snowbusters
- Two Rivers Activity Club

Richard Gaiman
(541) 480-1906

Email

Membership Director

District 5

- Klamath Basin Snowdrifters
- Rogue Snowmobilers
- Chiloquin Ridge Riders
- Cascade Connection
- Hi Desert Storm Troopers

Email

Grooming Director

District 5

- Klamath Basin Snowdrifters
- Rogue Snowmobilers
- Chiloquin Ridge Riders
- Cascade Connection
- Hi Desert Storm Troopers

Dan Riblett
(541) 882-0182

Email

Membership Director

District 6

- Harney County Snowmobile Club
- Grant County Snowmobilers
- Burnt River Snowmobile Club
- Sumpter Valley Snowmobilers

Tim Holly
(541) 620-0408

Email

Grooming Director

District 6

- Harney County Snowmobile Club
- Grant County Snowmobilers
- Burnt River Snowmobile Club
- Sumpter Valley Snowmobilers

Dave Hannibal
Cell (511) 820-0626

Email

Membership Director

District 7

- La Grande Sno-Drifters
- Panhandle Snowmobile Club
- Willows County Gamblers

Duane Miles
(541) 540-5151

Email

Grooming Director

District 7 & 8

- La Grande Sno-Drifters
- Panhandle Snowmobile Club
- Willows County Gamblers
- Four Corners Snowmobile Club
- Tillamook Trailfinders

Denny Farwell
(541) 540-1563

Email

Membership Director

District 8

- Four Corners Snowmobile Club
- Tillamook Trailfinders

Jeff Wagner
(509) 386-2425

Email

Avalanche Safety Coordinator

Safety

Email

Public Lands

John Vogel
Cell (541) 490-6114

Email

Oregon Snowmobile News

Gordon Scott
PO Box 18964
Portland, OR 97292
(503) 936-9592

Email

Webmaster

Kirk Snyder
818 SW 3rd Ave #144
Portland, OR 97204
(503) 702-2149

Email



<https://www.oregonsnow.org/become-a-member/>

Become a Member -
Oregon State Snowmobile
Association ([oregonsnow.org](https://www.oregonsnow.org))

WWW.OREGONSNOW.ORG

Visit
OregonSnow.org
is Oregon State Snowmobile Association's
Official Website.





MOTOR SPORTS
www.outlawmotorsportsinc.net

504 N.W. 1ST ENTERPRISE, OR 97828

(541) 426-3491 (888) 603-1273

OUTLAW@EONI.COM



Corporate Graphics & Printing LLC

Serving West Coast Business and Industry for 35 years

(503) 936-9592 Customer Service

corporate.graphics.printing@gmail.com



POLARIS

Morrow County
Grain Growers

350 Main Street
P.O. Box 367
Lexington, OR 97839

Ralph Klock

Polaris Sales and Finance

Cell: 503-819-6126

541-989-8221

1-800-452-7396

ralphk@mcgg.net

ski-doo®

PRO CALIBER BEND

YOUR LOCAL
POWERSPORTS
DEALER



PRO CALIBER
www.ProCaliberBend.com

3500 N HWY 97 | BEND, OR | (514) 641-5151



(503) 385-8108 1810 Lana Ave NE, Salem, OR 97301

www.dansmotorsports.com



858





elklakeresort.net



WINTER HOURS

Non-Holiday Weekends Thursday – Sunday

Thursday 11 am – 7 pm

Friday 11 am – 8 pm

Sat 9 am – 8 pm

Sun 9 am – 6 pm

*Front Desk/Retail/Gasoline Service open daily at 10 am

MLK Weekend and President's Day weekend

Thursday thru Monday

Holiday Weeks

December 19 thru Jan 5th (Open Daily)

Monday – Thursday 11 am – 7 pm

Friday 11 am – 8 pm

Sat 9 am – 8 pm

Sun 9 am – 6 pm

*On Thanksgiving Day, Christmas Eve, and New Year's Eve the Lodge and Restaurant close at 3 pm for Private Holiday Dinners

*Advanced reservations required

* Snowmobile and Snowshoe Rentals – 10 am – 6 pm



VOTED BEST RESTAURANT
WHERE TO EAT IN CENTRAL
OREGON BY
BEST MAGAZINE



VOTED TOP PLACE IN CENTRAL
OREGON FOR
BEST & LOST PROPERTY CASHIERS
BY BEST MAGAZINE



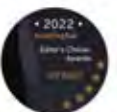
VOTED TOP PLACE IN CENTRAL
OREGON FOR
BEST WEDDING VENUE
BY SOURCE WEEKLY



VOTED TOP PLACE IN CENTRAL
OREGON FOR
HOLIDAY DINING ON THE WATER
BY BEST MAGAZINE'S BEST
MAGAZINE



VOTED TOP PLACE IN CENTRAL
OREGON FOR
KID FRIENDLY DINING
BY BEST MAGAZINE



VOTED TOP BEST HOLIDAY
DINING
VENUE
BY BEST MAGAZINE

Winter Adventures Await at Diamond Lake

As the landscape changes and the lake freezes over, there is so much beauty to explore at Diamond Lake.



From simple, rustic quarters to a spacious, modern retreat cabin. Plan your next getaway.

www.diamondlake.net



SNOWMOBILE RENTALS



SNOW TUBING



ICE FISHING

Experience DIAMOND LAKE

Motel Rooms - Cabins - Cafe
 Mt. Bailey Sports Bar and Grill
 South Shore Pizza Parlor - Store
 Marina - Gas Station w/ Non Ethanol Fuel
 Post Office - Laundromat
 Diamond Room Lounge - Diamond Lake RV Park

Snow Cat Tours to Crater Lake National Park
 Cat Ski Mt. Bailey - Ice Fishing
 Cross Country Ski and Snowshoe Rentals
 Snowmobile Rentals - Snow Tubing

Fishing Boats - Paddle Boats - Kayaks - Canoes - Patio Boats - Paddle Boards - Mountain Bikes

Mountain Bike Trails - Horseback Rides
 Hunting - Fishing - Sight Seeing - Hiking
 Boating - Camping - ATV Trails
 and so much more...

Diamond Lake Resort is located at the summit of the Southern Oregon Cascade Mountains. On Hwy 138 just 5 miles North of Crater Lake National Park. We are the hub of 300 miles of groomed Snowmobile trails and the only snowmobile access to Crater Lake National Park.

541.793.3333 | www.diamondlake.net



Schedule Your Next Event At



Oregon's Gem Of The Cascades



Discover Your Dream Winter Getaway

CRATER LAKE RESORT - YOUR NEXT VISIT INTO THE WILD

Sign up to unlock exclusive deals on your next hotel stay. Receive early access to limited-time promotions and personalized offers tailored just for you.

www.craterlakeresort.com

(541) 381-2349

We strive to provide our guests with hospitality, comfort & tailor-made service.

10 out of 10 - David (Expedia Reviews)

"Everything from the reservation system to the location of the resort was awesome. The very friendly staff definitely have a good eye on the quiet comfortable and safe accommodations. We just loved the peace and harmony afforded. Very clean and hot showers. My wife and I are really grateful to Crater Lake Resort for good vibes, accommodations and a starry night. Thank you!"

10 out of 10 - John (Expedia Reviews)

"We stayed in quaint little cabins that were just perfect, and incredibly clean. The deck overlooked a little stream (that we canoed in with the free canoe), and the office/store was nicely stocked with snacks, food, and refreshments. The staff was very friendly. It is a beautiful, uncomplicated place that was very enjoyable. We will be back!"

EXTRAORDINARY ACCOMMODATIONS

Indulge in a diverse array of activities at our Premium Resort

We offer a variety of amenities to make your stay comfortable and convenient, including full RV hookups, laundry facilities, a general store stocked with groceries, supplies and adult beverages; propane exchange stations; free WiFi; EV charging station; pickleball court; hiking trails featuring a floating bridge and a covered bridge; canoes to navigate Fort Creek; a children's playground; and recreation center available for weddings, conferences, and parties.

Welcome to Crater Lake Resort

Discover the beauty and tranquility of Crater Lake, Oregon, at Crater Lake Resort.

Nestled in the heart of nature, our resort offers a perfect getaway for outdoor enthusiasts, families, and those seeking peaceful relaxation. Whether you're here to explore the world-famous Crater Lake, hike the scenic trails, or unwind by the campfire, Crater Lake Resort is your home base for adventure.

Just 6 miles from Annie Creek Sno-Park.

541-381-2329

www.craterlakeresort.com

Cabins, RV Sites with full hookups, Tent sites and much more...



INTRODUCING OUR SERVICES & FACILITIES

Everything you need to ensure your journey is flawless.

At Crater Lake Resort, we foster a friendly and welcoming community of RV enthusiasts, hikers, campers, and nature lovers. Join us for social events, live music, and more.



50711 Crater Lake Highway, Chiloquin, Oregon 97626

Hours of Operation:

Mon - Wed Noon to 5pm

Thurs - Sun 10am to 5pm

20% Discount for resort reservations to anyone who mentions
this ad in the **OSSA News**. This discount good through May, 2025



50711 Crater Lake Highway, Chiloquin, Oregon 97626

Hours of Operation:

Mon - Wed Noon to 5pm

Thurs - Sun 10am to 5pm

Just 6 miles
from Annie Creek
Sno-Park.

541-381-2329

www.craterlakeresort.com

**Cabins, RV Sites with full hookups, Tent sites
and much more...**



5 Stars - Kate H.
(Google Reviews)

"Very clean, easy check-in/out, and the proximity to CLNP made it the perfect place for us while exploring the area."

5 Stars - Sam S.
(Google Reviews)

"Don't let the modest marketing fool you - this place is awesome!! Our cabin was adorable with all the amenities we could have needed. We had such a fun time walking around the trails, canoeing, and swinging on the tree swings. Felt like an adult playground! Wish we could have stayed longer!"

10 out of 10 - David
(Expedia Reviews)

"Everything from the reservation system to the location of the resort was awesome. The very friendly staff definitely have a good eye on the quiet comfortable and safe accommodations. We just loved the peace and harmony afforded. Very clean and hot showers. My wife and I are really grateful to Crater Lake Resort for good vibes accommodations and a starry night. Thank you!"

10 out of 10 - John
(Expedia Reviews)

"We stayed in quaint little cabins that were just perfect, and incredibly clean. The deck overlooked a little stream (that we canoed in with the free canoe), and the office/store was nicely stocked with snacks, food, and refreshments. The staff was very friendly. It is a beautiful, uncomplicated place that was very enjoyable. We will be back!"

Our General Store is a fully stocked store and currently offer snacks, pre-packaged sandwiches, frozen foods, and beverages (including adult beverages), etc. We also have a grill and pizza oven on the patio for customer and guest use. We hope to have hot food option-savialable by the February.

Our store is currently open from noon to 5pm, seven days a week. These hours will remain in effect until approximately April or May.

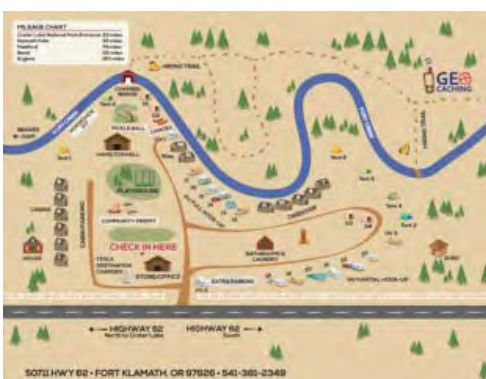


Photo credits, Elizabeth Ashley

WINTER WONDERLAND



Winter Rates for Cabin & RV Sites Everyday!

Snowmobiling • X Country Skiing • Snowshoeing • Ice Fishing
• Resort Open Thursday Through Monday • New Menus & Offerings this Winter

ABOUT 40 MILES FROM KLAMATH FALLS, ASHLAND AND MEDFORD

TOLL FREE 866-201-4194 WWW.LAKEOFTHEWOODSRESORT.COM



WINTER LIVE MUSIC

EVERY SATURDAY IN THE LAKE HOUSE RESTAURANT FROM 5PM - 7PM

12/31 ~ MARTY COMBS TRIO IN THE LOUNGE 6PM - 9PM

1/4 ~ DAVE BRENDLINGER
1/11 ~ BILL SCHOLER
1/18 ~ MARTY COMBS
2/1 ~ DEVON HACKETT
2/8 ~ TIM & DENNIS MITCHELL
2/15 ~ THE MERCY DUO
2/22 ~ BILL SCHOLER
3/1 ~ DAVE BRENDLINGER
3/8 ~ DEVON HACKETT
3/15 ~ TIM & DENNIS MITCHELL
3/22 ~ MARTY COMBS
3/29 ~ COOL DISPOSITION



CALL 5419498300 FOR RESERVATIONS



Sumpter Valley Blue Mountain Snowmobile Club

Here is a link to the OSSA sign up page for the Klamath Basin snowdrifters.

<https://www.oregonsnow.org/klamath-basin-snowdrifters/>

We had 24 members attend the January meeting. Thanks to all that attended.

We have 86 family members that have joined up so far this season.

Remember Poker Run is scheduled for Feb. 15th. We will be donating to **Best Friends of Baker City and SAR (Baker County Search and Rescue)**. If our snow holds out and stays with us, we will be having 4 stations on the trails for a purse of \$500 for the people that go out and they will also have a chance for our normal \$3000 pot. In order to qualify for \$500, you must hit all 4 station on the trails plus the other 3 from town stations. Hope we have a great turnout.

Oregon Vintage Snowmobile Race Circuit Group had their 1st race of the season on Jan. 18th & 19th at the fairgrounds. (Martin Luther King weekend.) Stage Stop provided food on both days. Make sure you thank them for being there. Both days were extremely cold.

2nd set of races are scheduled for Feb. 22nd & 23rd. Hope to see you there.

2024 – 2025 CALENDAR OF EVENTS **Regular**
Monthly Meetings (subject to change) POTLUCK starts at 6:00 PM at **Sumpter Community Center**. Bring your own-table service and drinks. **The Club meeting starting at 7:00 PM on the third Thursday of each month from September through April.** If you can't make the potluck, you can still come for the meeting.

Dates and times are subject to change so please check the schedule for each month. **Regular Monthly Meetings (subject to change)**

- * Thursday Feb. 20, 2025, 6:00pm
- * Thursday March 20, 2025, 6:00pm
- * Thursday April 17, 2025, 6:00pm

Volunteers Hours Needed

I need **members only** volunteer hours, that you do, thru out each month to report to OSSA. Please let Jane know, thru email Svbmsc-secytreas@outlook.com or you can text me at 208-739-3498. We report it as Charity and it helps with funding for new groomers, fuel, new groomer sheds, etc. If you need info on what can be counted, please call me.

Membership:

A new season starts September 1st. Even if you don't have a snowmobile, you might have an ATV or just want to drive around the roads to enjoy the great outdoors, remember the money that goes to OSSA is for a good cause. It keeps our trails and forest roads open for all of us to use, ATV/UTV's, Snowmobiles. We can't let them shut it down.

Grooming/Trail Cleaning Report

They have groomed 626 miles so far. They had a breakdown but worked hard to get it fixed and now just waiting for fresh snow. Hopefully we will get lots of snow in February.

LINKS TO ISSUES OF INTEREST TO SNOWMOBILERS

American Council of Snowmobile Associations

<http://www.snowmobilers.org/>

Blue Ribbon Coalition

<http://www.sharetrails.org/>

Blue Mountains Forest Plan Revision

<http://www.fs.usda.gov/goto/BlueMtnsPlanRevision>

Forest Access for All

<http://forestaccessforall.org/>

OPRD Statewide Trails Plan

http://www.oregon.gov/oprd/Trail_Programs_Services/Pages/Trail-Plans.aspx

Oregon State Snowmobile Association

oregonsnow.org

Wallowa Whitman NF Travel Management Plan

http://www.fs.usda.gov/detail/wallowa-whitman/landmanagement/projects/?cid=fsbdev7_008909





Here is a link to the OSSA sign up page for the Klamath Basin snowdrifters.
<https://www.oregonsnow.org/klamath-basin-snowdrifters/>

Sumpter Valley Blue Mountain Snowmobile Club

Dallas Buck & Richard Kludt cutting trees



A few of us riding to Austin House for lunch. Wes & Vickie Christensen, John & Elaine Livran and Jane Leatherman. Gary & Lynne Applegate and Mike Bogart drove over to join us for lunch.



Austin House



In front of Austin House



Dallas Buck cutting trees



In back of Austin House

We are Open to Mid-March for Winter Season



www.paulinalakelodge.com



Dec 31st 8am to 8pm Breakfast, Lunch and Dinner.

Snowmobile from the front door of your cabin

Paulina Lake Lodge

22440 Paulina Lake Road

La Pine, OR 97739

www.paulinalakelodge.com

541-536-2240

paulinalakelodge@outlook.com

Open
Until Mid March

Sno cat shuttles

Restaurant and Bar Hours

Friday 11am to 7pm

Sat 11am to 8pm

Sunday 11am to 5pm

Saturday night

Our Famous Prime Rib

5pm to 8pm

Cocktail Bar

Bloody Marys Hot Drinks





🔴 Huge News: McKenzie Pass Grooming is ON for 2024-2025! 🔴

🔥 Big win for the Mt. Jefferson Snowmobile Club and all our awesome riders! After months of hard work, we've officially locked in grooming operations on McKenzie Pass Highway 242 for the 2024-2025 season. Get ready for epic trails, smooth rides, and another killer winter on the mountain! ❄️

This is a game-changer for everyone who loves winter adventures on McKenzie Pass. We couldn't have done it without YOU—our community of over 3,000 supporters who signed the petition, shared the message, and proved just how much this place means to all of us. 🏔️👏

So get your sleds prepped, your gear ready, and let's make this season unforgettable. This is just the beginning, and we're not slowing down. Next up: working toward a long-term solution to keep these trails open and legendary for generations to come. 🌟

Thank you for being the heart and soul of this incredible win. Stay tuned for updates, and let's ride into this season stronger than ever. Let's show everyone what this snowmobile family is made of!



We need more snow!

In spite of not having a lot of snow our trails are in pretty good condition. Our grooming has been kind of hit and miss. On March 1st the Tollgate Trailfinders has invited our club for a club ride. We've been told that they have good snow.

- Mt Hood Snowmobile Club

SWS Mountain Guides Certified Avalanche Courses Diamond Lake Resort, OR 2025

A-3 Avalanche Level 1

Cost: \$625.00

January 12-14
February 23 - 25



AMERICAN
AVALANCHE
ASSOCIATION

A-3 Avalanche Rescue

Cost: \$295.00

January 11
February 22
March 8

A-3 Avalanche Level 2

Cost: \$775.00

March 9-11



Call or Book online:

swsmountainguides.com

209-753-6556

888-797-6867



LANDOWNERS DESERVE YOUR RESPECT



Protect Land Use Privileges

•Stay on the Trail! •If you Don't know - Don't Go.



Wallowa Avalanche Center

PO Box 324
Joseph, Oregon 97846

(503) 329-6603

Info@wallowaavalanchecenter.org

[https://wallowaavalanchecenter.org/
classes-events/](https://wallowaavalanchecenter.org/classes-events/)

www.wallowaavalanchecenter.org

SAT
8

February 8, 2025 @ 8:00 am - February 9, 2025 @ 5:00 pm

AIARE Level 1 Feb 8-9, 2025 Joseph

What: This course is a hybrid design with pre course online learning that should take on average 8 hours to complete. Students will also be required to participate in a 2 hour zoom session approximately 1-week before the start of the two field sessions. Pre course online learning materials will be sent out a month before [...]

\$500

SAT
15

February 15, 2025 @ 8:00 am - February 16, 2025 @ 5:00 pm

AIARE Level 1 Feb 15-16, 2025 Joseph

AIARE Level 1 Feb 15-16, 2025 Joseph \$500.00 What: This course is a hybrid design with pre-course online learning that should take on average 8 hours to complete. Students will also be required to participate in a 2-hour Zoom session approximately 1-week before the start of the two field sessions. Pre-course online learning materials will be [...]

\$500



YOU HEARD IT HERE FIRST!!!

SLED DRAGS

at Wanoga Snow Park

Saturday Feb 22nd!

Starts at 1230pm 3 Class' -Stock (cans and pipes are ok), Mod(turbo, etc), and Just for fun. The permit process was delayed so we are just now able to post the announcement. We could not officially post until we were granted permission from the forest service which just happened. We are also well aware that they are going to be conflicting events and schedules. That is just how the winter sports are. See you there!

- \$25 fee which includes 2 practice runs
- Registration starts at 8:30
- Practice runs 9-10:30
- Lunch at 11:00
- Racers Meeting at 12:00
- Drags start at 12:30
- Prizes at the Wanoga shelter after





Moon Country Snowbusters always does a chili feed for the Bachelor Dog Derby Sled Race. This year we are switching it up to a Chili Cook off. **Anyone who is an OSSA member can enter.** March 2nd, chili turn in is 11:00, feeding starts at 12:00 at Wanoga snow shelter. The mushers of the race will be voting, there will be 1st, 2nd and 3rd prizes.

Text me at (541) 390-5503 to get on the entry list

March 2nd, 2025. Chili turn at 11:00.

1st, 2nd and 3rd place prizes



THIS IS THE BIG ONE!™



MARCH 6 - 9, 2025

**FIRST INTERSTATE BANK CENTER AND
DESCHUTES COUNTY FAIR & EXPO CENTER**

Show hours;

Wednesday – Friday 11am – 8pm

Saturday 10am – 8pm

Sunday 10am – 6pm

Move-in hours

Tuesday March 4th 12pm – 8pm

Wednesday March 5th 8am – 8pm

Booth Info;

\$900.00

10 x 10 booth

8' draped back wall and 3' draped side walls

One electrical outlet up to 600-watt capacity

Exhibitor sign

24-hour security staff

Master passes and discount coupons

If all 6 clubs in central Oregon plus OSSA join in the booth. The cost to each club would be \$128.50, 5 clubs \$150.00, 4 clubs \$180.00, 3 clubs \$225.00, 2 clubs \$300.00 and 1 club \$450.00. We would need volunteers from each club to help run the booth. Clubs involved would be;

The following clubs will be participating in the Central Oregon Sportsman's Show March 6-9 in Redmond, OR at the Deschutes county fairgrounds.

OSSA

Sister's Sno-Go-Fer's

Moon Country Snowbusters

Ochoco Snow Sports

Lodgepole Dodgers

Two Rivers Activity Club

Thank you,

Roger Ellis

OSSA Membership Director

District 4

Rellis@oregonsnow.org

(503) 475-8095



2025 Public Meeting Schedule

Blue Mountains Forest Plan Revision

Malheur, Umatilla, and Wallowa-Whitman National Forests

These meetings offer an opportunity for the public to learn about the upcoming NEPA process and to hear plan development updates. For questions and more information, please reach out to sm.fs.bluesforests@usda.gov or (541) 278 - 3716.

The public meetings will be in person and virtual. Meetings will be held from 5 - 8 p.m., with doors opening at 4:30 p.m. More information and meetings links will be available at <https://tinyurl.com/ythmbdnt>.

**Please note:
New dates for the
next step in the
Blue Mountain
Forest Plan
Revision**

Blue Mountains Forest Plan
Revision Winter 2025 Public
Meeting Schedule

All public meetings will be
held from 5 – 8 p.m.
Doors open at 4:30 p.m.

**Virtual links and informa-
tion will be available at:**
[https://www.fs.usda-
govdetail/umatilla/
home/?cid=fseprd1200075](https://www.fs.usda.gov/detail/umatilla/home/?cid=fseprd1200075)

Forest Service Link
[https://www.fs.usda.gov/
detail/umatilla/home/?cid=
fseprd1188541](https://www.fs.usda.gov/detail/umatilla/home/?cid=fseprd1188541)

Date	Host Forest	Location
February 24, 2025	Umatilla National Forest	Gilliam & Bisbee Event Center 105 E May St Heppner, OR 97638
February 25, 2025	Umatilla National Forest	Pendleton Convention Center, West Conference Rooms 1601 Westgate Pendleton, OR 97601
February 26, 2025	Umatilla National Forest	Columbia County Fairgrounds, Pavilion 5 N Pine St. Dayton, WA 99328
March 3, 2025	Malheur National Forest	Grant County Fairgrounds, Trowbridge Pavilion 411 NW Bridge St John Day, OR 97845
March 4, 2025	Malheur National Forest	Harney County Fairgrounds, Memorial Building 8556D S Egan Ave Burns, OR 97720
March 5, 2025	Wallowa-Whitman National Forest	Cloverleaf Hall 800 NW 1st St Enterprise, OR 97828
March 6, 2025	Wallowa-Whitman National Forest	Baker County Fairgrounds 2600 East St. Baker City, OR 97814
March 7, 2025	Wallowa-Whitman National Forest	Eastern Oregon University, Gilbert Event Center EOU – 1 University Blvd La Grande, OR 97650



NORTHWEST
POWERSPORTS



COLUMBIA GORGE POWER SLEDDERS - POKER RUN

FOR QUESTIONS CALL WALT AT 541-980-1146

Check us out on Facebook and columbiagorgepowersledders.com

FEBRUARY 22nd, 2025

Billy Bob Snow Park

10:00am to 1:00pm

Hands will be sold starting at 10am (\$5.00 per hand)

Drawing and Prizes Begin at 2:00 pm

Food compliments of the Columbia Gorge Power Sledders

50/50

and

Prizes to win



WALKER RIM RIDERS

Crescent Lake, Oregon

EST. 1972

Representing the Eugene, Springfield, and Crescent Lake Area

President: Riley Spence

[Email](#)

Vice President: Doug Wardell

[Email](#)

Secretary:

Treasurer: Tracy Strode

[Email](#)

Grooming Co-Chairman: Cole Stuller

[Email](#)

Grooming Co-Chairman: Tyler Hovelsrud

[Email](#)

Mailing Address:

PO Box 1090

Crescent Lake OR 97733

[Facebook Page](#)

[Club Map](#)

March 2025

2 - Candlelighter's Snow Day - Junction Sno-Park - 9:00AM

8 - Timpanogas Lake Ride - Junction Sno-Park - 9:00AM

8 - Club Meeting - Fire Hall - 6:30PM

April 2025

12 - Trail/Work Party - Junction Sno-Park - 9:00AM

12 - General/Voting Meeting - Junction Sno-Park - 2:00PM

May 2025

10 - Work Party to Stain Junction Sno-Park Warming Shelter - 9:00AM

10 - Club Meeting - Fire Hall - 6:30PM

June 2025

14 - Trail/Work Party - Junction Sno-Park - 9:00AM

14 - Club Meeting - Fire Hall - 6:30PM

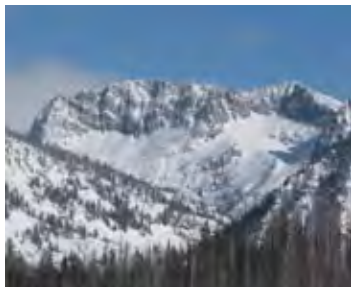
July 2025

12 - Diamond Lake Dirt Ride - Junction Sno-Park - 9:00AM

12 - Club Meeting - Fire Hall - 6:30PM

August 2025

9 - Kayak Float - Junction Sno-Park - 9:00AM



La Grande Sno- Drifters Annual **LAST CHANCE POKER RUN**



March 1nd, 2025

We are finally getting some snow again and hopefully, we are done with the really cold weather!

The **La Grande Sno Drifters** are holding a club ride at Ladd Canyon on February 22nd, meeting at the parking lot at 9am, pack a lunch as we will eat on the trail.

Our Poker Run is Saturday, March 1st. Hands start being sold at 9am at the Catherine Creek SnowPark. Dinner will follow after the ride at the Union County Fair Grounds 4H Building. We are looking for sponsors and silent auction items for this event. If you would like to sponsor or donate please contact Amber via call or text at 541-786-4412.

Start at 9 AM at Catherine Creek Summit Snow Park • \$5 a hand
Riders buy hands at the Snow Park 9-11 AM •
For info, email lgsnodrifters@gmail.com•
facebook.com/lagrandesnodrfters

Hands need to be turned in by 2pm to warming shelter
Dinner to follow @ 6pm at 4H Building at Fair Grounds in La Grande where winners will be announced! Dinner provided by:

Our 2025 Sponsors



1505 Adams Ave
541-605-0724





Hi All from Grant County!

We started off our GCSC year with a kickoff bbq at the Carniglia shop in December, where there were some fun giveaway prizes, good food and conversations about the upcoming season! Our groomer operators also met and went through our two Prinoth's and got them ready to roll. We met in January at the Outpost and discussed planning some club rides and events (snow pending). We also elected a new Vice-President, Seth Barrietua. We appreciate him stepping up to fill the position!!

Our club was represented at the OSSA convention by members Dave Hannibal and Cindy Broadwater. Our president Garrett and his wife Emma were unable to attend this year due to welcoming our newest club member on the 20th of January! I guess that is one way to "grow" our membership!!!

Our club got a call to help out our local sheriff in getting the solar panels cleared of frozen fog and snow at the Dixie Mtn repeater location. Club members Garrett and Ely Carniglia as well as Seth Barrietua and another friend made the trip out the ridge top in very dense fog with limited visibility and were able to clear the panels and get the repeater back up and running. We appreciate our members always being available to lend a hand where needed. Thank you!!!

Some of our club members also recently attended and supported the vintage oval races held in Sumpter in January. It is always a great time with awesome folks from the Sumpter club!!

Our groomer operators have been busy clearing trails and keeping them safe. There has been a good number of folks out using the trails!! Things are a bit different in some areas due to logging operations keeping roads plowed, but we are managing around that.

We are currently getting more snow after a dry January, and it is stacking up quickly! Get out and enjoy it while it's here! Please like and follow us on Facebook for grooming updates and other info! We are under the group name "GCSC". Thanks and ride safe!!!



Our club president Garrett Carniglia with expectant wife Emma. They had a baby girl!!



Hi All from Grant County!



Ashley Brandsma



December season kickoff bbq at the Carniglia shop.



Club member Dylan Brandsma racing IFS class on the inside in Sumpter.



Grooming from both Huddleston and Parish snow parks. Shoutout to Dave Hannibal, Allen Taylor and Jay Carniglia for the beautiful trails!



Cam Barrietua racing on the 120. This is his second year racing!!!



Club member Christopher Gibson first time racing on the ovals.



Club member Ely Carniglia sweeping off the solar panels on Dixie Mtn.



Seth (vp) and Garrett (pres.) having some fun on the oval track in Sumpter.



Mix group of Harney county and Grant county riders at the High Lake rim on a gorgeous blue bird day!



Chiloquin Ridge Riders

12080 Homedale Road
Klamath Falls, OR 97603



Just when the snow was getting thin, Klamath County got a huge snowstorm! Perfect timing!

Chiloquin Ridge Riders have had a busy month so far.

Thank you to our groomers, they have been able to put around 700 miles on our cat this season, so far. On 2/2, our club's cat received some servicing to keep it in tip top shape for the rest of the snow season!

On 2/8, the club had a club ride. It was well attended with around 15 members & family friends. After playing around, there were chili dogs to be eaten!

For March, we plan to have a club ride again on 3/8. More details to follow about the ride after our March meeting. We will send an email out to all the Chiloquin Ridge Riders members.

Please don't forget to thank or wave at the volunteers helping keeping our trail systems groomed and open! Be on the lookout for updates about 2026 Convention hosted by the Klamath Basin Snow Drifters & Chiloquin Ridge Riders.





Ready to Join the Santiam Snowmobile Club? Signing up has never been easier!

Just a few clicks and you'll be part of an amazing community that loves the outdoors as much as you do. Whether you ride snowmobiles or side-by-sides, we've got events, trails, and adventures waiting for you!

Join today: <https://members.oregonsnow.org/.../Application/QraZaqpW>

Let's ride, volunteer, and grow together!

#JoinTheClub
#Snowmobiling
#SideBySide

#OutdoorAdventure
#SantiamSnowmobileClub

#MembershipMatters
#GetInvolved



The PB400 is on the mt. With a Marion county escort.
<https://www.facebook.com/share/p/15eBGGvAMz/>



Snowmobile Safety Tips

Provided by the Oregon State Snowmobile Association

Never ride alone (it could be deadly)

- You could get stuck, breakdown, or get lost.
- You could have snowmobile roll over and pin you down.

New rider instruction

- Squeeze throttle slowly until you get used to the power.
- Hold tight, but do not have a death grip on handlebars. Allow handlebars to move slightly (usually an inch) from side to side.
- Do not follow too close.
- Do not cut blind corners.
- Stay on main trails. Tree stumps and rocks can be hidden under the snow off trail.

Alcohol and drugs (even prescription or over the counter)

- Impairs ability to react and think

Carrying passengers

- Most snowmobiles are not designed for carrying two passengers
- 2-Up snowmobiles are safest for two people
- Hazards of having a person sit in front of you on a non 2-Up
 - Hit head on handlebar, dash, or windshield on fast stop
 - They can accidentally grab the throttle
 - Sharp right turn will force front passenger into throttle
 - Reduce right turn will force front passenger into throttle
 - Reduce ability to handle the snowmobile safely



GPS Maps

- Free GPS maps for your mobile device are available at <http://oregonsnow.org/clubs/>

Follow the leader

- Leader should never disappear, even if followers know where the leader is going
- Leader should slow down at corners so that everyone takes corners at a safe speed (especially important if leading beginners)

Obey the laws to preserve our ride to ride

- 5 MPH in the Sno-Park
- Reduce excessive noise around Sno-Park and non-snowmobilers
- Slow down and stop if necessary when approaching sled dogs
- Slow down when passing skiers and pedestrians
- Avoid accidents, do not follow too close
- Respect the environment. You can be fined for destroying trees.

Protecting the snowmobile

- Overheating is the #1 cause for expensive repairs. Rental agencies will charge you for repairs related to overheating.
- Watch temperature gauge and use ice scratchers when needed.
- Going too slow for too long (less than 10 MPH) can cause overheating on almost any snowmobile.

Safety

- It is easier than you think to become dehydrated. Carry water and a protein bar.

What to do when stuck

- Avoid gunning the engine as you will become more stuck
- Tip sled on its side and pack snow under. When all else fails, get out shovel.

Clothing

- Avoid scarves or loose clothing that could get caught on snowmobile.
- Dress in layers. Cotton will stay wet and is dangerous in extreme conditions.
- Two or three thin layers will keep you warmer than one thick piece of clothing
- Thick gloves are great for skiing but bad for snowmobiling. Thick gloves prevent the hand from heated handlebars from warming your hands and reduce your ability to hold the handlebars and work the brake and throttle.

For additional safety information go to <http://www.snowmobileinfo.org/>





A Memorable Weekend at the 2025 OSSA Convention

There's nothing quite like spending a weekend surrounded by passionate snowmobile enthusiasts, and the 2025 Oregon State Snowmobile Association (OSSA) Convention was chock full. From January 16-18, we gathered at Diamond Lake Resort, just a short drive from the breathtaking Crater Lake, for three days of connection, education, and, of course, snow.

One of the best parts of attending was getting to spend quality time with members from clubs all across Oregon. Whether it was sharing meals, swapping stories over drinks, or hitting the trails, the sense of camaraderie was strong.



The Highlight: Showcasing the Stage V Bison X

The standout moment of the weekend? Bringing the Stage V Bison X to the convention. Snowmobile clubs across the state rely on top-notch grooming equipment to keep trails in peak condition, so getting the chance to introduce our machine to OSSA members was a big deal.

On Friday morning, Prinoth and other manufacturers joined a roundtable discussion, where OSSA President Dennis Jordan led an engaging Q&A with club groomers. The conversations were insightful, with operators eager to share experiences and ask great questions about the latest in grooming technology.

That afternoon, we rolled out the Bison X for a hands-on show-and-tell session. More than 15 operators gathered to see it in action, and we spent hours demoing and answering questions. Seeing the excitement firsthand made all the effort worth it!



Looking Ahead

Beyond the presentations and demonstrations, the convention was packed with valuable training sessions, riding skill workshops, and group rides. OSSA continues to do an amazing job bringing the community together and supporting the sport. Overall, it was a fantastic weekend, and we're already looking forward to next year's convention. Until then, we'll be out on the trails, making sure every ride is as smooth as possible!

Prinoth

PROUD TO BE YOUR TRAIL GROOMING PARTNER IN **OREGON**

REACH OUT TO YOUR
LOCAL SALES REP

Nathan Vandersluis
nathan.vandersluis@prinoth.com
(541) 948-0860

SCAN THIS CODE
TO LEARN MORE!



**TUCKER
SNO-CAT®**

CORPORATION

No road too steep...

NO SNOW TOO DEEP.

Building Quality Since 1942.



SCAN THIS CODE

**Made in
the USA!**

**Call: 866-SNO-CAT1
or 541-779-3731
www.SNO-CAT.com**

*Experience the
4-Track Advantage!*

2872 S Pacific Hwy • Medford, Oregon 97501 • Fax: 541-779-3735



WHERE PRECISION



MEETS PERFORMANCE

Piston Bull[®]

For parts, service, and sales, call
our Oregon office:

503-783-1935

Or contact Colin Hales at:

503-550-5941



#6,400 miles
of volunteer
groomed trails

A Day in the Life of a Volunteer Groomer

Did you know that OSSA has 24 clubs in Oregon and that all 24 clubs volunteer to groom the snowmobile trails?

Typical Grooming Day:

5:00 am Wake up.

6:00 am Drive 90 minutes up to the mountain.

7:30 am Prepare the Grooming Machine for the day.

8:00 am Begin Grooming the trails.

8am to 6pm Groom the trails, remove fallen trees, remove moguls, make roads through snow drifts.

6:00 pm After grooming 50 to 60 miles return to Groomer Barn and begin refueling and cleaning the Groomer.

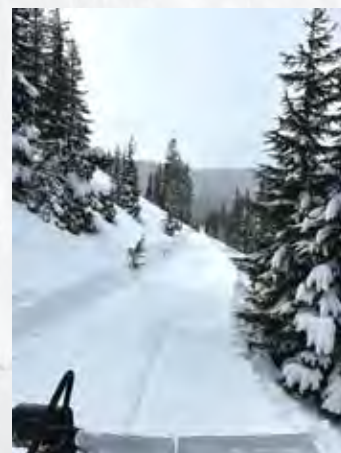
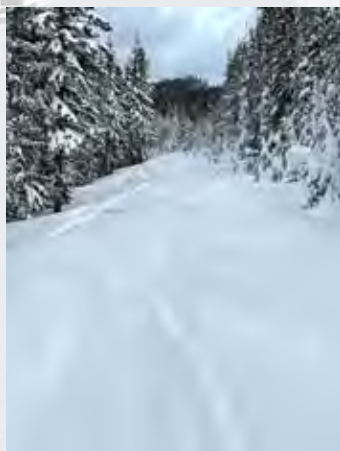
7:00 pm Head for home.

8:30 pm Arrive home and crash.

Did you know that the best way to ***"THANK YOU"*** to a groomer volunteer is to renew your membership every year?

Many OSSA members join every club in every area that they ride just to say, ***"THANK YOU!"***

Oh yeah, if you see a Groomer Volunteer be sure to shake their hand and say ***"THANKS"***.





Sumpter Valley Blue Mountain Snowmobile Club

Find us on [Facebook](https://www.facebook.com/sumptersnowmobileclub) (<https://www.facebook.com/sumptersnowmobileclub>)



**Congratulations to all our
class winners
from the Oregon
Vintage Snowmobile Race
in Sumpter.**



Youth 120 and 200- Axl C, Nox C, and Hank M.

We also had kagen W, Jaxton E, Cam B and Hallie D that couldnot join use for day two.

Youth Stock 340- 1 Trenton Wild, 2 Blaine Arnold

Youth IFS- 1 Trenton Wilde

Master Stock- Glenn Warren

Stock 340 Fan- Parker Helgesen

Stock 340 Free air/Liquid- Bill Turner

Stock 440 Fan- Katy Martin

Youth Stock 440- Blaine Arnold

Womens Stock 340- Elizabeth Ruchert

Super Stock 440- Ty Murray

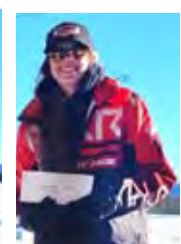
Womens Stock 440- Katy Martin

MOD 440- TY Murray

IFS Fan- Bill Turner

Stock 440 Free air/Liquid- Gattett Carniglia

IFS 500+ Liquid- Glenn Warren



HAVE FUN ON YOUR RUN

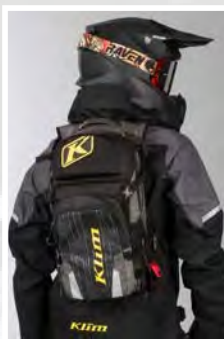
BUT DON'T DRINK 'TIL YOU'RE DONE

This message brought to you
by the American Council of
Snowmobile Associations
www.snowmobilers.org



Snowmobile Safety

For more safety tips go to: www.snowmobile-ed.com
Avalanche Training: www.nwac.us



Did you know that you must have a valid driver's license or snowmobile safety card to operate a snowmobile in Oregon? OSSA offers snowmobile safety classes for all ages, even kids as young as 7 years old. See: www.oregonsnow.org/contact/safety-training/ Snowmobile safety starts before you go up to the mountain.

Are you totally prepared? Here's a partial list of items to consider carrying: Shovel, hand saw, water, protein bar, 2 way radio, SPOT unit, cell phone with spare battery, maps, first aid kit, matches, fire starter, extra socks, extra gloves, emergency blanket, whistle, tampons, compass, mirror, zip ties, duct tape, Leatherman tool pliers.

Tow Strap

Snowbunje allows you to tow a snowmobile without 2 riders (available at most snowmobile dealers).



Backcountry must have items:

Shovel, Avalanche Probe, Avalanche Beacon, Avalanche Backpack



SUMPTER ANNUAL POKER RUN



TWO JACKPOTS! \$3000 & extra \$500 for trail participants

SNOWMOBILE & WALK ABOUT!

FEBRUARY 15th 2025

* Walk About Requires : 7 Stations, all located in Town

- Trail Run Requires : All available Trail Stations and any remaining Stations needed from Town to achieve a total of 7 stations

* All Trail Participants must have a snowmobile license on their machine

* Full Participant Rules available at Registration

REGISTRATION

Location : Sumpter School House

FRIDAY Feb 14th 6pm-8pm

SATURDAY 15th 8am-1:00pm

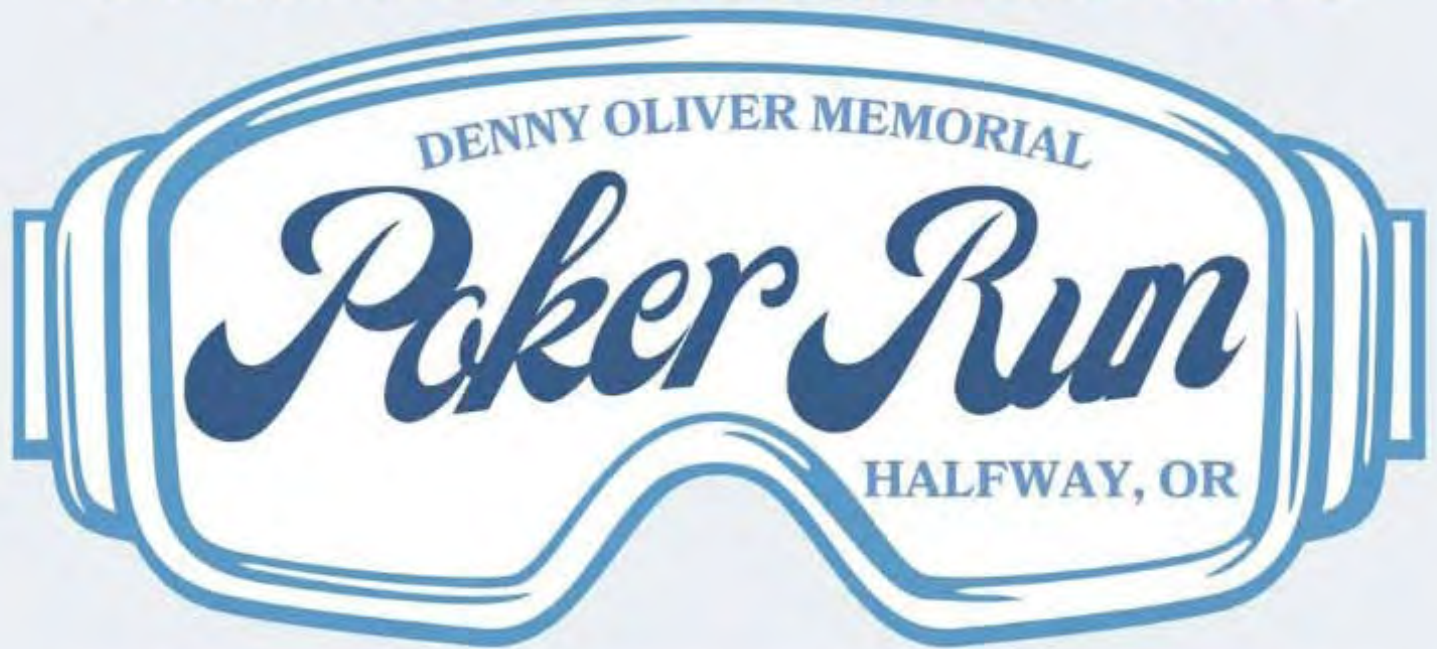
Early Registration recommended for Trail Participants

Registration later than 9:30am Saturday will make it difficult to complete the run

Awards Ceremony & Raffle - Saturday 6pm at the Groomers Shed

Sponsored by Sumpter Valley Snowmobile Club

PANHANDLE SNOWMOBILE CLUB



Sunday
16
FEB 2025

9 AM-12 PM

PAYOUT - 6 PM

@ LION'S CLUB

Breakfast - 7 am

Dinner - 4 pm

@ Lion's Club

PROCEEDS SUPPORTING
HALFWAY LION'S CLUB
& PINE VALLEY GRANGE

JASON HARRIMAN- 541-742-6641

MARY HEROLD- 541-742-6446

JAKE ROE- 541-540-2065

Snow Park Permit Required

25 Miles

Bonfires at each station

\$5 Hands- No Limit

\$4000 Payout

1ST PLACE - \$1600

2ND PLACE - \$1000

3RD PLACE - \$800

4TH PLACE - \$400

5TH PLACE - \$200





To Register - Click this link:

<https://oregonsnowmobileassociation.growthzoneapp.com/ap/Events/Register/6VFB067tmC1CZ>

Saturday, February 15,
2025

Description

Rogue Snowmobilers, Central Equipment, and Diamond Lake Resort, has joined together to host Oregon's Premier Snowmobile event.

Come join Rogue Snowmobilers and all your snowmobile and Snowbike friends at Diamond Lake, on Saturday, Feb 15th. This is the largest event of its kind in the western states.

Your entry includes a tour around Southern Oregon's most AWESOME Snowmobile/Snowbike country.

⑤ Pricing

Event Entry and First hand for each rider is \$15.00

Additional hands for a rider are \$5.00 each - available after you purchase your first hand - You can purchase as many extra hands as you want.

Most people will buy their Entry hand and 2 extra hands for \$25

📍 Diamond Lake Resort

350 Resort Dr
Diamond Lake, 97731

Thank you to all our sponsors!



👤 Event Contact

Greg Gulrich

Email: madness-iz-back@live.com

🕒 Saturday, February 15, 2025

Snowmobile Poker Run

Online pre-registration is available on our website. Now open through Monday, February 10th.

In-person pre-registration is available 5:30PM - 7:30PM Friday, February 14th at the lodge at Diamond Lake.

Check-in Saturday, Feb 15th at 8:30 am (you'll pickup your registrations packets)

Rider's meeting and safety briefing at 10:00am

Poker run begins at 10:15 am

Checkpoint 5 will open up at 2:30PM at the lodge and remain open through 4:30PM for those who want to get last-minute hands. No more hands will be sold after 4:30PM to give our volunteers time to prepare for winners.

Dinner will be upstairs in the Baily room at the lodge from 5PM - 8PM. Awards and winners will be announced during this time.



- Representation
- Education
- Grooming
- Community Service
- Information
- Socializing

The Rogue Snowmobilers, located in the Rogue Valley, are the largest snowmobile club in the state of Oregon.

We are a non-profit snowmobile club responsible for grooming in the area just west of Crater Lake National Park in an area known as Thousand Springs Snow Park.

Our club **maintains over 150 miles of trails**, most of which are groomed weekly.

We want to ensure not only do snowmobilers have access to these parts of the woods, but anyone.



www.roguesnowmobilers.com
Oregon's Largest Snowmobile Club

ROUGE SNOWMOBILERS SCHEDULE OF EVENTS 2025

March	2025	
1-2	No Host Ride	10-Mile Snow Park
4	General Club Meeting, & Pie Auction, 6:00pm	IOOF Central Point
TBA	Cascade Ladies Ride	TBA
15-16	Snow Drifters & Rogue Play Day	Annie Creek Sno-park
TBA	District 5 Playday	TBA
11	Board Meeting 6:00 pm	Teams
29	Last Hurrah/ Winter Banquet	Claude Lewis Sno-park
April	2025	
1	General Club Meeting 6:00 pm	IOOF Central Point
5	No Host	3-Lakes Sno-Park
8	Board Meeting 6:00 pm	Teams
TBD	Candlelighters Ride	1000 Springs Sno-park



Ready to take the next step?

You don't need to attend club functions in order to join our club. Even for those of you that don't care much about group rides/functions, your membership is the main line of defense of keeping your riding area open and accessible. Our club officers and board members work tirelessly to protect your riding areas. In some cases, we are able to restore riding rights in closed areas for your enjoyment. Without your membership, we can't do it. Join our team to get involved today!

<https://roguesnowmobilers.com/membership>



The Tollgate Trailfinders have these activities completed and planned.

Jan 4, TTF, Umatilla and Union County SAR held a basic Avalanche Rescue training put on by WallowaAvalanche Center.

Jan 18 TTF hosted a club ride with Spokane Winter Knights.

Feb. 8 TTF hosted Snowmobile and Snow bike rides for a visiting WSSA convention riders.

March 1 TTF is hosting club rides with The Mt Hood Club.



Here are a few pics. 3 are from the WSSA Snowbike Group at Tollgate. The other 3 are a few of us enjoying the deep powder at Tollgate.





Tollgate AVY Class



LOCALLY OWNED AND OPERATED
EST. 2023



WE'LL GET YOU THE MOST MONEY
FOR YOUR VEHICLE GUARANTEED!

■ Free Instant Cash Offer

■ 72-hour Live Auction

■ Fast, safe, and secure

■ Only pay if it sells

★ 4.9 ON GOOGLE



SELL TODAY

160+ REVIEWS

☎ (360) 718-7424

🌐 carsolve.com



500+ VEHICLES SOLD



Klamath Basin Snowdrifters **2024/2025 Schedule of Events**

General meeting locations are to be announced prior to the meeting on Facebook, due to limited seating and options. In addition, locations for club rides will also be announced on Facebook and at the general meeting prior to the ride.

Here is a link to the OSSA sign up page for the Klamath Basin snowdrifters.
<https://www.oregonsnow.org/klamath-basin-snowdrifters/>

February 2025

Tuesday 2-11-25: General Meeting 7pm, dinner at 6 PM (location TBA)

Saturday 2-22-25: Club Steak Feed and club ride (location TBA)

March 2025

Tuesday 3-11-25: General Meeting 7pm, dinner at 6 PM (location TBA)

Saturday 3-22-25: Club Ride (details TBA)

April 2025

Tuesday 4-8-28 General Meeting 7pm, dinner at 6 PM (location TBA)

Saturday 4-19-25 End of Year Banquet at Trappers @ 5pm



Oregon State Snowmobile Association OSSA Membership

We encourage everyone to join their local snowmobile club which automatically includes an Oregon State Snowmobile Association membership.

You can be a member of OSSA without joining a local club. However, please consider joining the clubs where you ride in Oregon. These clubs groom and maintain the trails that you enjoy riding on.

If you live in another state or for some other reason don't want to join a local snowmobile club you are welcome to become an OSSA only Member.

Who Can Join?

Anyone who enjoys the outdoors can be a member including cross country skiers, snow shoers, dog sledders, snow bikers and of course snowmobilers.

Why should I join?

Our mission is to protect and enhance the sport of snowmobiling. We work closely with the Forest Service and BLM to keep areas open, resolve conflicts, and to provide the quality snowmobiling that Oregon is famous for. We work with local, state, and federal legislators to protect the rights of all snowmobilers. We fight any damaging legislation, and we support legislation that helps our sport. We coordinate with industry, national and international snowmobile groups to share knowledge, provide mutual support, and protect the sport we all love so dearly.

SNOWMOBILING IS A FUN FAMILY ACTIVITY



Join us today!

Trail Conditions/Grooming Reports

<https://members.oregonsnow.org/grooming>

Be sure to always
check avalanche
conditions before
you ride!



The Oregon State Snowmobile Association provides snowmobile trail grooming in the state of Oregon with a 100% volunteer effort. Our volunteers are out on the snow almost every day grooming the trails to provide a safe and enjoyable experience for snowmobilers, snow shoeing, cross country skiing and other recreationalists.

A typical volunteer grooming day begins with arriving at the grooming shelter before sunrise to get the equipment ready for the day. Not only do our volunteers groom the trails but we also remove fallen trees and obstacles from trails. In addition we provide search and rescue assistance in emergencies. It's not uncommon for our volunteers to put in a 10 or 12 hour day grooming. It takes many many hours of training to become a primary groomer. Our groomers are trained in first aid, CPR, and equipment safety and maintenance.

Be sure to show your appreciation by joining OSSA and your local snowmobile club today!





Wallowa Avalanche Center

PO Box 324
Joseph, Oregon 97846

(503) 329-6603

Info@wallowaavalanchecenter.org

<https://wallowaavalanchecenter.org/classes-events/>

www.wallowaavalanchecenter.org

About Us

The Mission of the Wallowa Avalanche Center is to keep winter backcountry travelers safe in the mountains of Northeast Oregon through education, avalanche advisories, mountain weather information and observations.

We begin bi-weekly avalanche forecasts in the fall after enough snow accumulates in the mountains for on-snow travel in the backcountry and continue them until early April. We also offer a variety of classroom and field based educational programs, including instruction specifically aimed towards youth, backcountry skiers, snowmobilers, and professionals.



Victor McNeil, Director

victor@wallowaavalanchecenter.org

Victor began spending winters in the Wallowas in 2009, and has worked as a professional ski and mountain guide for the past 12 years. As a native of Oregon, Victor graduated from Southern Oregon University with a degree in Small Business Management. During the spring and summer, Victor guides in Alaska, Washington and Peru on high altitude peaks and technical summits. As an American Mountain Guide, Victor has achieved the highest level of certification in Mountain Guiding, through the American Mountain Guides Association. Victor has achieved a Level 3 Avalanche Certification through the American Avalanche Institute. La Grande, OR is home for Victor with his wife and 2 Golden Retrievers. When not out backcountry skiing, Victor is working on his snowmobile skills and how to develop better avalanche education for motorized backcountry users.



Rex Stanley, Development Director

Rex hails from the small town of Baggs, WY, where he grew up snowmobiling with his family and learning to snowboard on the slopes of Steamboat Springs, CO. He attended Boise State University where he graduated with a degree in Business Management. Currently living in La Grande, OR, he is learning to explore the backcountry of the Wallowas and Elkhorns via his split-board and snowmobile. He hopes to increase the reach that the WAC has for all backcountry users, and build upon the growing backcountry culture here in Northeast Oregon. When the snow melts, he can be found hiking and riding his bike with his pup and wife. He also serves as board member of the local mountain biking chapter, Blue Mountain Singletrack Trails Club.



Michael Hatch, Avalanche Specialist

hatch@wallowaavalanchecenter.org

Michael Hatch grew up in Boise, ID and earned a B.S. in Resource Conservation/Wilderness Studies from the University of Montana, and an M.S. in Education from Eastern Oregon University. Currently Hatch is the director of the Outdoor Adventure Program and instructor of Health and Human Performance for EOU. Hatch worked for over a decade as a backcountry ski guide in the Sawtooths and Wallowas. One of Hatch's biggest passions is teaching avalanche courses, as an AIARE Course Leader for Level 1 and 2 classes. Hatch is a professional member of the American Avalanche Association and is also a board member for the WAC.



Nick Burks, Avalanche Specialist

Nick began skiing before he can remember. He started working on the Mt. Hood Meadows Pro Patrol in 2005 and became the Snow Safety Supervisor there in 2014. Nick spent the summers of 2016 and 2017 working as a ski area avalanche forecaster in the Cradleburn mountains of New Zealand. He has traveled to ski in Chile, Argentina and Japan.



Caleb Merrill, Avalanche Specialist

Caleb Merrill grew up on the coast of Maine, eventually venturing west in search of more snowfall and vertical relief. He began his career in the snow and avalanche arena in 2006 as a ski patroller at Solitude in the Wasatch mountains of Utah. Early morning avalanche mitigation routes with explosives along exposed ridgelines are amongst the favored memories of this job. Caleb became a guide with Ruby Mountain Helicopter Skiing in 2014, and has enjoyed exploring the nooks and crannies of this hidden gem of a range while learning amongst some of the best guides in the industry. He is the creator, host, and producer of *The Avalanche Hour Podcast*—a side project aimed at creating more dialogue amongst the snow and avalanche community. Caleb is actively progressing through the AMGA ski guide program in hopes of certification. He completed an AIARE level 3 course in 2014, and is currently an AIARE course instructor. He looks forward to a winter in the Wallowas—getting to know the terrain, snowpack, and people.



Kelly McNeil, Avalanche Specialist

Kelly grew up in Eastern Wyoming where she started exploring the Big Horn mountains on snowmobiles and dirt bikes at an early age. During that time, she also learned to ski in the South Dakota Black Hills. Kelly moved to Montana for her undergrad and was introduced to backcountry skiing. After many years of school and earning her Ph.D. from Oregon State University in 2009, she began a career as a professor at Eastern Oregon University, where much of her work focuses on public health and research in outdoor physical activity including the study of behavior in outdoor environments. Recently Kelly has started to assess how public health theories and practices can be utilized for avalanche education and forecasting. Since 2017, Kelly has helped organize and run operations at the Wallowa Avalanche Center, including teaching avalanche courses for both motorized and non-motorized users. In 2019 Kelly took her Professional Level 1 Avalanche Course and will be taking her Professional Level 2 Course this February. Last winter Kelly completed her AIARE Instructor Training Course at Togwotee, WY on a snowmobile. Kelly is a Professional Member of the American Avalanche Association, a guest host on the *Avalanche Hour Podcast*, and has also completed her AMGA Alpine Skills Course.



YOUTH OPERATORS NEED SAFETY TRAINING

**KEEP THEM SAFE.
GET THEM TRAINED.**

This message brought to you by the American Council of Snowmobile Associations
www.snowmobilers.org

Are you New to snowmobiling ?

Do you want to learn how to ride Safely ?

Do you want your kids under age 16
to be able to ride Legally ?

Oregon Snowmobile Law says:

ORS 821.150 drivers license or permit required. Class D Fine up to \$250

**We can CERTIFY kids 16 and under
without a driver's license.**



The OSSA Safety Program

Below is a list of current state approved snowmobile safety trainers.

Please contact your local trainer to get your kids 16 or younger without a drivers license trained and obtain their snowmobile safety certificate now.

Medford Area

Dennis Jordan (541) 826-6326

Portland Area

T.J. Reilly (503) 804-2075

Roseburg Area

Glenn Shirek (541) 673-3787

Salem Area

Maria Sammons (503) 569-5552

Klamath Falls Area

David Miller (541) 884-2423

Boring Area

Brent Younker (503) 695-2911

Hood River Area

John Vogel (541-490-8114)

John Day Area

Lyle Klenski (541) 620-1324

Enterprise Area

Randy James (541) 426-3854



SNOWMOBILE RENTAL COMPANIES

Portland Area Snowmobile, ATV, Dirt Bike & SxS rentals

<https://mthoodatv.com/>

Portland snowmobile rentals

<https://skwatercraftrentals.com/Rentals-Tours/Snowmobile-Rentals>

Mt Hood guided snowmobile tours

<http://www.mthoodoutfitters.com/winter/snowmobiling>

Southern Oregon & Rogue Valley snowmobile rentals

<http://www.rentsleds.com/>

Mt Bachelor guided snowmobile tours

<http://www.coadventures.com/>

Mt Bachelor snowmobile rentals at Elk Lake Lodge

<https://outridersnw.com/> 503-298-9175

Sunriver area snowmobile rentals:

<http://floatationnation.com/>

Bend area snowmobile rentals:

<https://adventurerentals.weebly.com/>

Central Oregon snowmobile rentals

<http://www.central-oregon-rentals.com/snowmobile-rentals.html>

Elk Lake Lodge snowmobile rentals

[http://elklakeresort.net/
activities/winter/](http://elklakeresort.net/activities/winter/)

Diamond Lake Lodge snowmobile rentals

<http://www.diamondlake.net/winter-recreation#snowmobile>

Odell Lake Lodge snowmobile rentals

<http://www.odelllakeresort.com/activities/snowmobiling/>





OSSA is excited to announce that we have partnered with ArcticFx Graphics!

Established in 2004, ArcticFx Graphics is the original online sled wrap brand and has grown to become the go-to graphics company for the snowmobile industry's top athletes and brands.

Learn more about ArcticFx Graphics on their website.

Sled Graphics: www.arcticfxgraphics.com

SxS/UTV Graphics: www.utvfxgraphics.com

Moto/SnowBike Graphics: www.motofxgraphics.com

Use code OSA15 to receive a 15% discount on your order!



SledWrapR Design Studio 4

At ArcticFX Graphics, we are continually thinking of new and innovative ideas to make the process of designing, buying, and installing graphics easier than ever. The result of this continuous mission is the SledWrapR Design Studio. The SledWrapR delivers a simple and engaging online design experience that gives you the creative freedom to edit colors of any sled wrap graphics kit in real time. With 80 colors available for each design layer, the SledWrapR puts the power of over 134 quadrillion color combinations in your hands.

Our interactive editor has been rebuilt from the ground up to give you more convenience and control than ever before. Over eighteen years of experience in the industry backs the creation of the new SledWrapR Design Studio 4.

MATERIALIZE YOUR VISION INTO A REALITY.

EMPOWER YOUR CREATIVE SIDE.

MAKE IT YOURS.



Disclaimer: This is a general overview of the main maintenance milestones. Maintenance can differ depending on your exact snowmobile. Follow the operator's guide for exact maintenance to be performed. Scan the QR code to access the all operator's guides.

1 PRE-SEASON/PRE-RIDE

XPS 4T OR 2T OIL		
DRIVE BELT		
CARBIDES & SLIDES		
QRS ROLLERS & CVT		
BRAKE PADS - EPC		
BATTERY - EPC		
XPS ICE COOLANT		

2 DON'T FORGET!

Every 4000 mi / 6000 km		
XPS CHAINCASE OIL		TRANSMISSION OIL
Every 6000 mi / 10 000 km		
SPARK PLUGS		
Every 5 years		
XPS COOLANT		FUEL FILTER - EPC

SKI-DOO FIT VALIDATION



KEEP YOUR SKI-DOO SNOWMOBILE AHEAD OF THE PACK WITH XPS & BRP GENUINE PARTS



Fines increased to \$880 when chains are required.

If you are towing a trailer your tow vehicle must have chains when “chains or traction tires required.”

If you trailer has brakes you must also have chains on your trailer when “chains or traction tires required”.

<https://www.tripcheck.com/Pages/Chain-Law>





To enjoy this...



**WE ARE SO THANKFUL
FOR OUR VOLUNTEERS!**

Klamath Basin Snowdrifters



Always wear
protective gear
to stay safe

Volunteer hours and miles Are Vital to OSSA

What is a snowmobile club volunteer ?

By Lisa Mahoney, OSSA Executive Director

A snowmobile club volunteer is a special person who dedicates their time, energy, and sometimes money to benefit not only their snowmobile club but others. This person is involved, helpful, charitable, selfless and always humble. Much of the time, the public has no idea what our volunteers do. So, let us share just a few things that they do.

They voluntarily maintain over 31,500 miles of multi-use trail each year. These trails benefit not only snowmobilers but cross-country skiers, snow bikers, snow-shoers, and dog sledders. In the spring and fall, volunteers are busy cleaning trails and putting up trail markers to get ready for the next season. They cut wood and fill the shelters for all to use. They build bridges, shelters, re-roof existing grooming sheds, and do their own maintenance on their sno-cats. They voluntarily teach snowmobile safety classes and avalanche safety classes. They donate to charitable organizations such as Candlelighters, Wounded Warriors, Hospice, and Meals on Wheels just to name a few.

Our volunteers are the backbone of our organization. We could go on and on about all that they do. So, we want to humbly thank each and every one of you for your hard work and dedication to our wonderful organization.

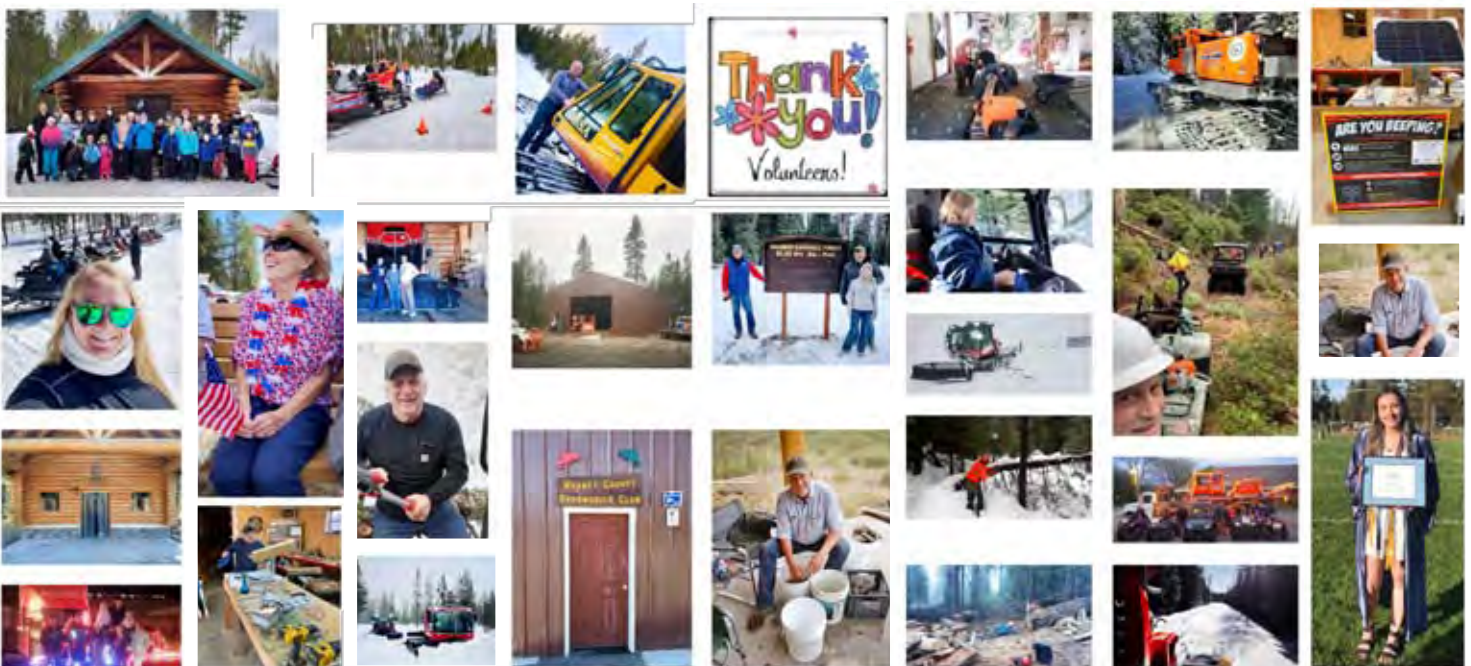
Volunteer hours/miles = \$\$\$\$. More \$\$\$\$ = the more we can provide for snowmobiling!

[CLICK HERE FOR VOLUNTEER FORM](#)

Use this form to track your volunteer hours and miles. Please turn in the form monthly.

You can mail to OSSA, PO Box 6255, Bend, OR 97708; email to lmahoney@oregonsnow.org; or fax to (458) 202-1193.

Thank You so much for all that YOU do for snowmobiling!



KNOW THE RISKS AND BE PREPARED



Avalanche Safety Guidelines

GET THE GEAR: Ensure everyone has an avalanche transceiver, shovel, and probe on their person and knows how to use them.

GET THE TRAINING: Take an avalanche course.

GET THE FORECAST: Make a riding plan based on the current avalanche and weather forecast.

GET THE PICTURE: If you see recent avalanche activity unstable snow exists. Riding on or underneath steep slopes can be dangerous.

GET OUT OF HARMS WAY: One at a time on all avalanche slopes. Don't go to help your stuck friend. Don't group up in runout zones.



United States: www.avalanche.org

Canada: www.avalanche.ca

WHEN NIGHT RIDING, SLOW DOWN



Expect the unexpected

A MESSAGE BROUGHT TO YOU BY



Snowmobilers Care
About Our Environment



Keeping Nature
Beautiful

www.snowmobile.org

ISMA

International
Snowmobile
Manufacturers
Association

Scholarships



2025 KEN HAEVERNICK OSSA SCHOLARSHIP

OSSA scholarship is available to either graduating high school seniors or a person currently enrolled in a college or trade school full time (12 semester credits), either physically or online. Scholarships will be given to the winners regardless of other grants or scholarships that the students may receive.



2025 OSSA Scholarship Application [Link](https://www.oregonsnow.org/assets/pdf/2025+Ken+Haevernick+OSSA+Scholarship+Application/)

<https://www.oregonsnow.org/assets/pdf/2025+Ken+Haevernick+OSSA+Scholarship+Application/>

Requirements are as follows:

1. The applicant or immediate family must be a paid member of Oregon State Snowmobile Association.
2. The applicant must submit the completed application form.
3. The applicant must submit a cover letter. This letter must include the student ID number and college/trade school name and the address to which a scholarship check would be sent.
4. The applicant must submit a resume detailing his/her involvement in snowmobiling as well as extra-curricular/volunteer activities.
5. The applicant must include an essay (essay subject on the application form). The essay **MUST** follow the format below to be accepted and should be sent in Word or Google Docs:
 1. Minimum of 2 pages – typed.
 2. Double-spaced.
 3. Font – Times New Roman.
 4. Font size – 12 point.
 5. Margins – set to 1 inch for all margins (top, bottom, left side, right side).
 6. Page numbers (if included) should be .5 inch from the top of the page (not within the 1" margin).
 7. A header (for example, the essay question) can be added 1 inch from the top of the first page, and then enter a double space to begin your essay.
 8. Do NOT use bold-faced type or other special settings.
 9. If work is cited, add an additional "work-cited" page at the end of the essay. This information will NOT be counted as part of the 2-page minimum.

The applicable documents must be received via email at the OSSA Office by April 1, 2025. Please email to Lmahoney@oregonsnow.org using a subject line of OSSA Scholarship Application. All applicants will be notified of the final scholarship selection by April 15, 2025. The scholarship winner will be announced at the OSSA Board Meeting in May 2025.

6. Any entry that does not meet ALL of these requirements will be disqualified. NO EXCEPTIONS.

Additional rules:

1. Students must use the scholarship within one year of receiving it.
2. All scholarship checks will be written directly to the college and not to the student. NO EXCEPTIONS.

**KEN HAEVERNICK OREGON STATE SNOWMOBILE ASSOCIATION
2025 SCHOLARSHIP APPLICATION**

OSSA scholarship is available to either graduating high school seniors or a person currently enrolled in a college or trade school full time (12 semester credits), either physically or online. Scholarships will be given to the winners regardless of other grants or scholarships that the students may receive.

Requirements are as follows:

1. The applicant or immediate family must be a paid member of Oregon State Snowmobile Association.
2. The applicant must submit the completed application form.
3. The applicant must submit a cover letter. This letter must include the student ID number and college/trade school name and the address to which a scholarship check would be sent.
4. The applicant must submit a resume detailing his/her involvement in snowmobiling as well as extra-curricular/volunteer activities.
5. The applicant must include an essay (essay subject on the application form). The essay **MUST** follow the format below to be accepted and should be sent in Word or Google Docs:
 - a. Minimum of 2 pages – typed.
 - b. Double-spaced.
 - c. Font – Times New Roman.
 - d. Font size – 12 point.
 - e. Margins – set to 1 inch for all margins (top, bottom, left side, right side).
 - f. Page numbers (if included) should be .5 inch from the top of the page (not within the 1" margin).
 - g. A header (for example, the essay question) can be added 1 inch from the top of the first page, and then enter a double space to begin your essay.
 - h. Do **NOT** use bold-faced type or other special settings.
 - i. If work is cited, add an additional "work-cited" page at the end of the essay. This information will **NOT** be counted as part of the 2-page minimum.

The applicable documents must be received via email at the OSSA Office by April 1, 2025. Please email to Lmahoney@oregonsnow.org using a subject line of OSSA Scholarship Application. All

applicants will be notified of the final scholarship selection by April 15, 2025. The scholarship winner will be announced at the OSSA Board Meeting in May 2025.

- 6. Any entry that does not meet ALL of these requirements will be disqualified. NO EXCEPTIONS.**

Additional rules:

1. Students must use the scholarship within one year of receiving it.
2. All scholarship checks will be written directly to the college and not to the student. **NO EXCEPTIONS.**





OREGON STATE SNOWMOBILE SCHOLARSHIP
2025 APPLICATION FORM

Applicant Name: _____

Email: _____ Phone: (____) _____

Mailing Address: _____

City: _____ State: _____

Postal Code: _____

State Association: _____

Member of which local Club(s)? _____

Graduated from what high school or GED equivalent? _____

Attending which college, technical or vocational institute? _____

If already enrolled in a program, what year are you in? _____

High School or Equivalent GPA: _____

If applicable, college, technical or vocational GPA: _____

- ☐ Have you attached a cover letter introducing yourself and provided your student ID number and your college/trade school name and address to which a scholarship check would be sent?
- ☐ Have you attached a resume detailing your involvement in snowmobiling as well as extra-curricular school activities?
- ☐ Have you attached an essay on the following subject (must be at least 2 pages, double-spaced and typed)?





OREGON STATE SNOWMOBILE SCHOLARSHIP 2025 APPLICATION FORM

Essay Topic:

A week after President Biden took office, he signed an executive order that announced his commitment to protecting 30% of U.S. land and water by 2030.

Essay Challenge:

- How does this executive order impact snowmobiling?
- What action should snowmobilers take on the order?

Note:

Essays will be judged on depth of content, clarity, organization, and persuasiveness.



Did you know ...

Your privilege to snowmobile is being threatened?

Do you know who's representing your snowmobile interests in Washington DC?

It's the American Council of Snowmobile Associations (ACSA).

Are you a member? Do you care about snowmobiling?

Make sure YOUR voice is heard.



**Join your local snowmobile club,
your state snowmobile association and
become a member of ACSA TODAY
for only \$15.00!**

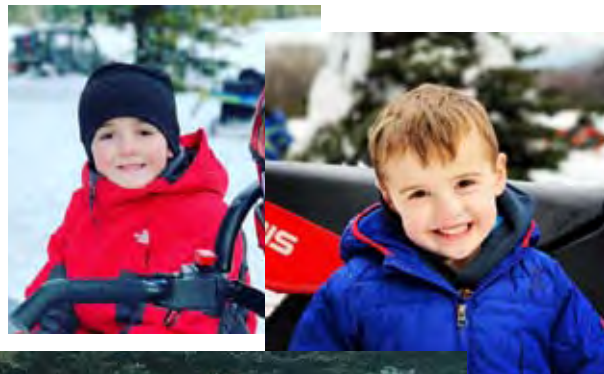
Now's the time to get involved!

www.snowmobilers.org





Four Corners Club





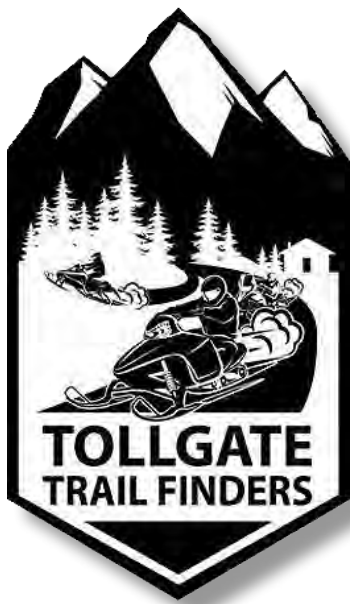
Klamath Basin
SNOWDRIFTERS





*Chiloquin Ridge
Riders*
12080 Homedale Road
Klamath Falls, OR 97603





CC Riders Cascade Connection Snowmobile Club Roseburg,
OR Douglas County

**Harney County
Snowmobile Club**







OSSA News Is Needing
YOUR Club group, event and
member ACTION photos
for publication!

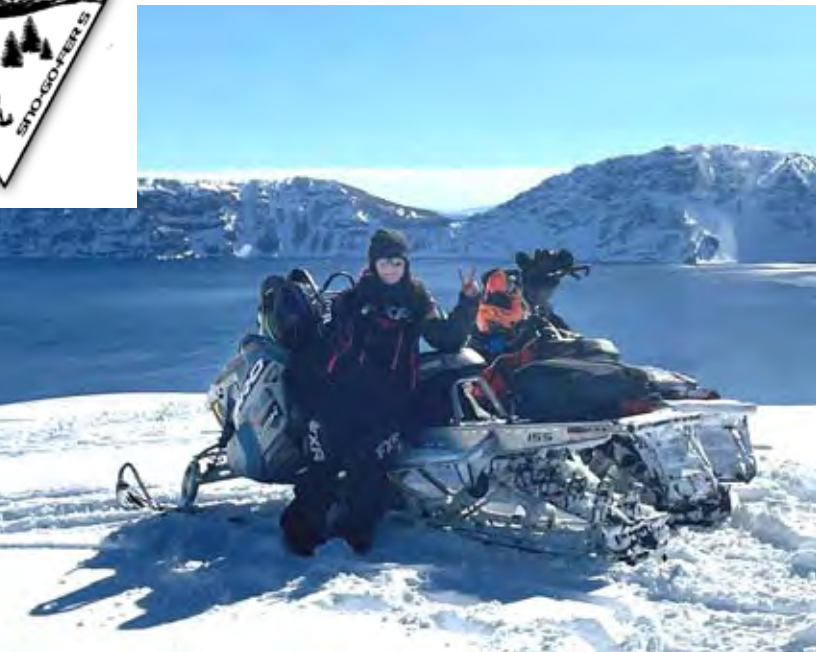
Please email them to:
gscott@oregonsnow.org

**Make New Friends, Join a
Snowmobile
Club**



You'll Never Ride Alone

International Snowmobile Manufacturers Assn.
1640 Haslett Road • Suite 170 • Haslett MI 48840
(517) 339-7788 • www.snowmobile.org





Two Rivers Activity Club



BE INFORMED!



BE A WINNER!

Visit snowmobileinfo.org for everything snowmobile.

Connect with snowmobiling





Oregon State Snowmobile Association

The Oregon State Snowmobile Association is a non-profit organization formed in 1972 by a small group of snowmobilers working to find a way to provide a groomed statewide trail system and to assure continued access to our public lands. We are currently an organization with twenty-five member clubs and a trail system of 6,410 miles of multi-use snowmobile trails. We promote safe and responsible snowmobiling, represent snowmobilers as an organized group and promote proper recreational use of our land by working together with the Forest Service, BLM and other land managers to develop and maintain a quality trail system and winter recreation opportunities. Our mission, briefly stated, is to protect, promote and enhance the family sport of snowmobiling.

Our Mission

Our mission is to protect and enhance the sport of snowmobiling. We work closely with the Forest Service and BLM to keep areas open, resolve conflicts, and to provide the quality snowmobiling the Oregon is famous for. We work with local, state, and federal legislators to protect the rights of all snowmobilers. We fight any damaging legislation, and we support legislation that helps our sport. We coordinate with industry, national and international snowmobile groups to share knowledge, provide mutual support, and protect the sport we all love so dearly.

******* Snowmobilers Leave No Trace *******